

Luja



LUJA – A REFINED AND POWERFUL GULET

LUJA offers accommodation for up to 8 guests in 4 comfortable cabins, including two master suites and two double cabins, providing a relaxing and enjoyable charter experience. It offers a perfect balance of classic craftsmanship and modern comfort.

Powered by 2 x 400 HP engines, LUJA provides enjoyable moments while cruising at 10 knots and reaching a maximum speed of 13 knots.

With an experienced crew of 4, LUJA is ready for unforgettable journeys in the Aegean and Mediterranean, inviting guests to easily discover breathtaking coastlines, hidden coves and charming seaside towns.

SPECIFICATIONS

NAME	Luja
BUILT	2013 / Refit: 2022
L.O.D.	24,8m
LENGTH	28,4m
BEAM	6,49m
NAVAL ARCHITECT	Itimat Shipyard
INTERIOR DESIGN	Alex Banakis
ENGINES	2 x 400hp Man
GENERATORS	2x30kW
MAX.SPEED	13 knots
CRUISE SPEED	10 knots
ACCOMMODATION	Guest: 8 Cabin: 4 Crew: 4 2 Master Cabins 2 Double Cabins 2 Crew Cabins

Luja



Luja



Luja



Luja



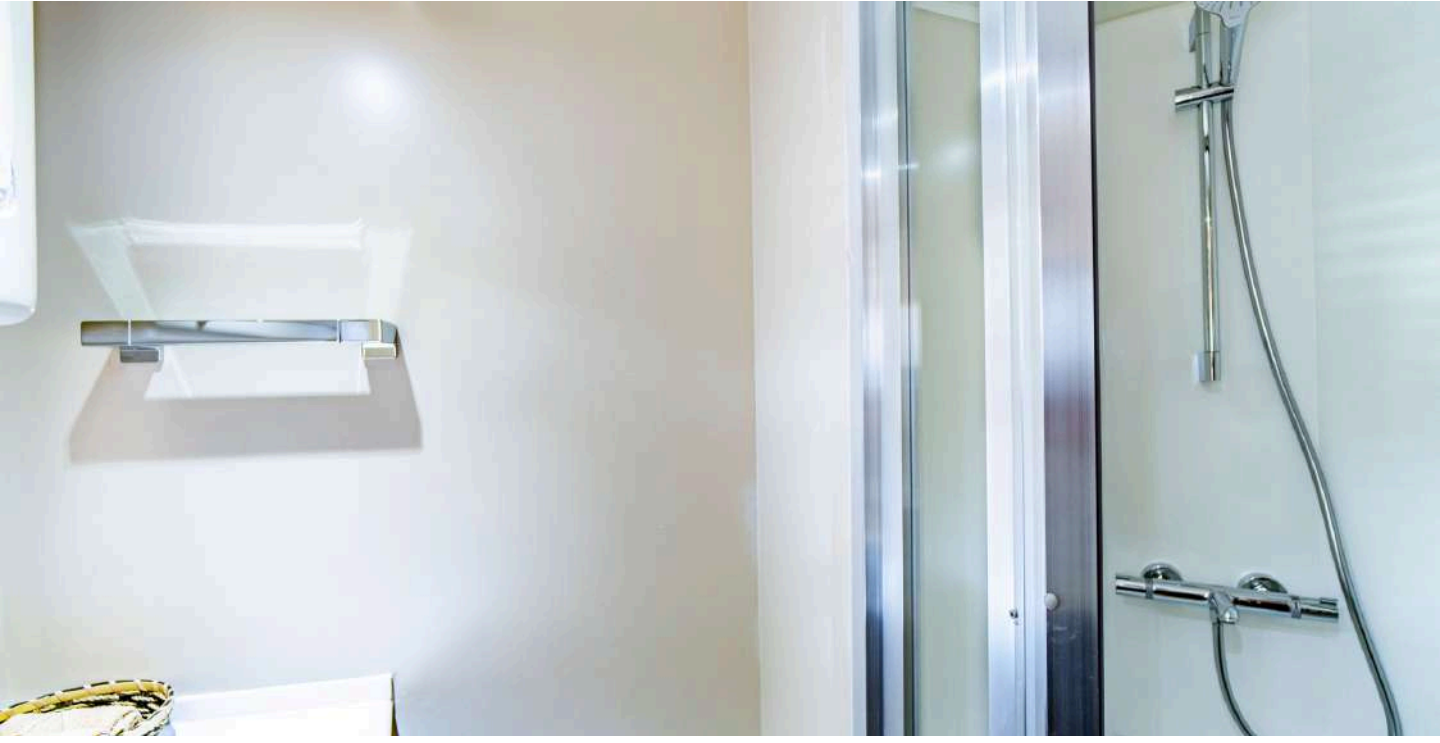
Luja



Luja



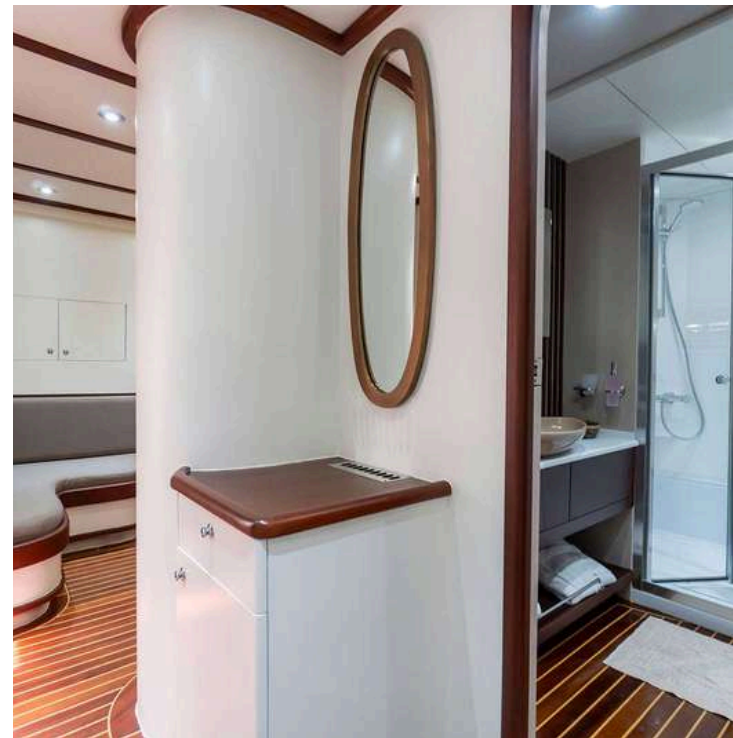
Luja



Luja



Luja



Luja



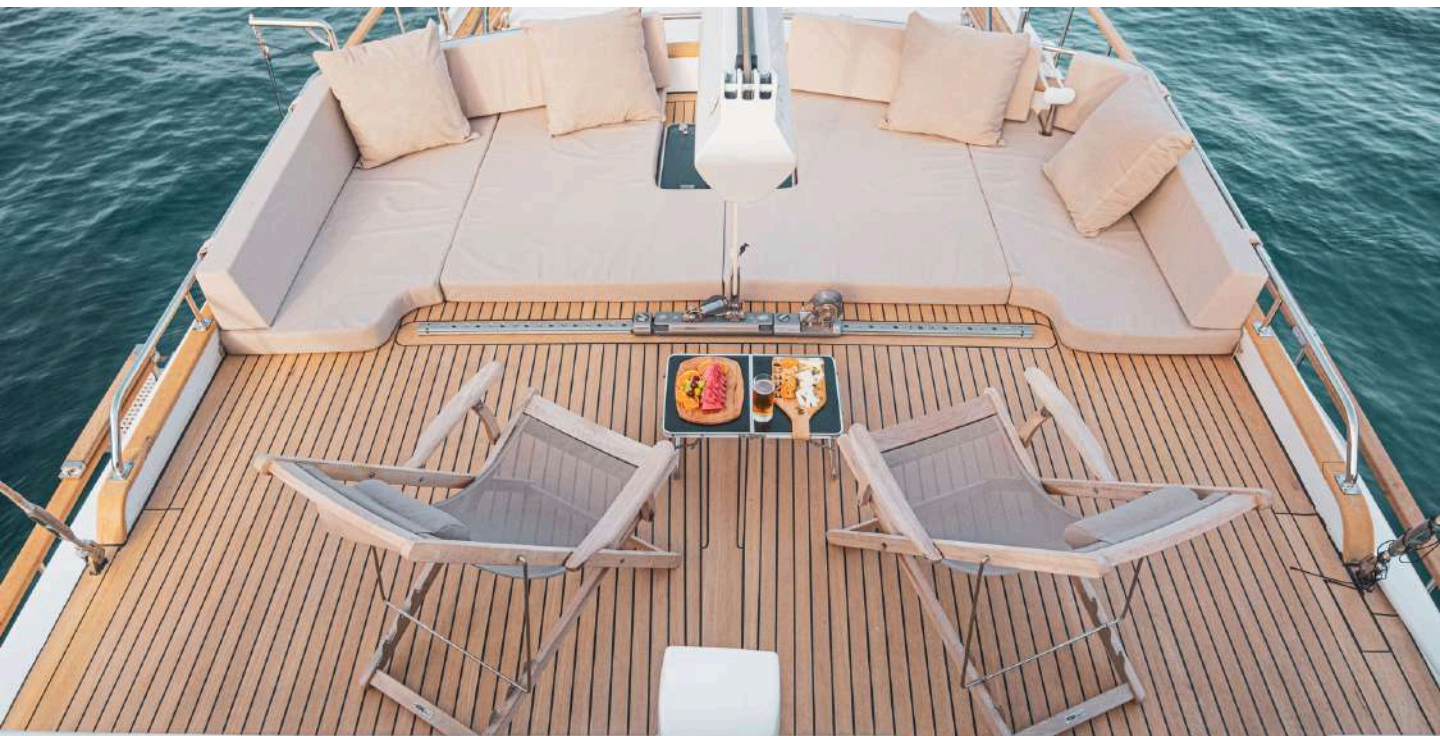
BROCHURE

Luja



Yachts offered are subject to availability. The particulars are believed to be correct but are not guaranteed and may not be used for contractual purposes. Specification provided for information only.

Luja



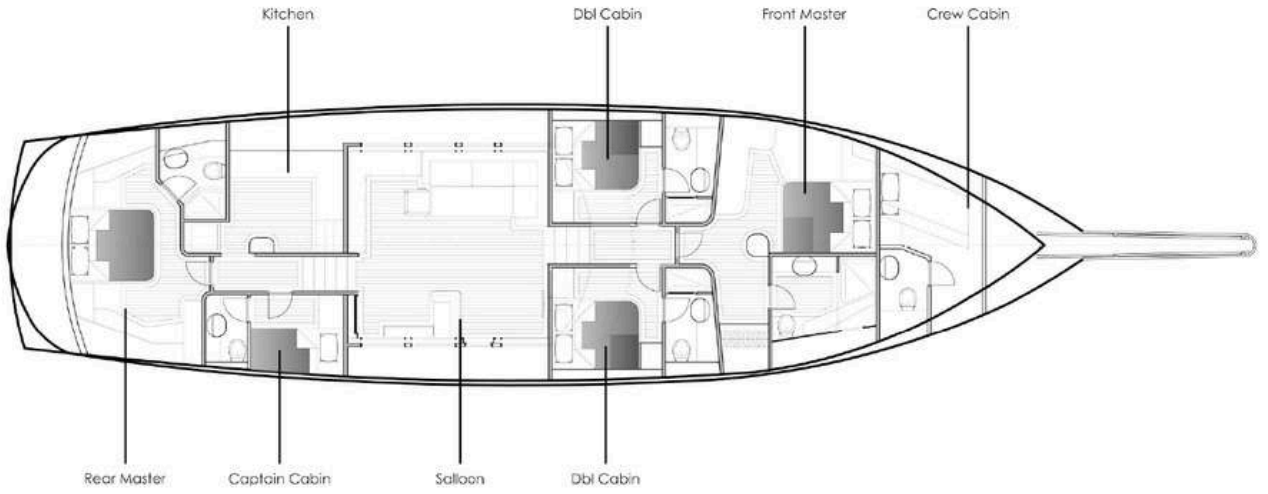
BROCHURE

Luja



Yachts offered are subject to availability. The particulars are believed to be correct but are not guaranteed and may not be used for contractual purposes. Specification provided for information only.

Luja



Luja

